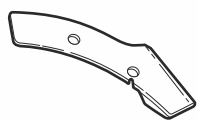


SHAD

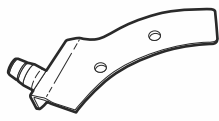
VESPA PRIMAVERA 50 / 125 '14- SHAD LOCKS V0PR19SC

SIZE
5

BCN



1 262944 x 1



2 262945 x 1



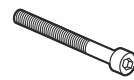
3 262918 x 1



4 262919 x 1
8x6x19



5 303000 x 1
Ø6



6 304071 x 1
M6X50 DIN 912

WARNING!

(GB)

Tight firmly the pivot.
Make sure that the pivot
is firmly tight.
LUBRICATE ONLY WITH
WD-40 OIL!
Check tightness every
4 months.

(E)

Apretar el pivote
fuertemente. Asegurarse de
que el pivote queda
totalmente fijado. LUBRICAR
SOLO CON ACEITE WD-40!
Repasar apriete cada 4
meses.

(D)

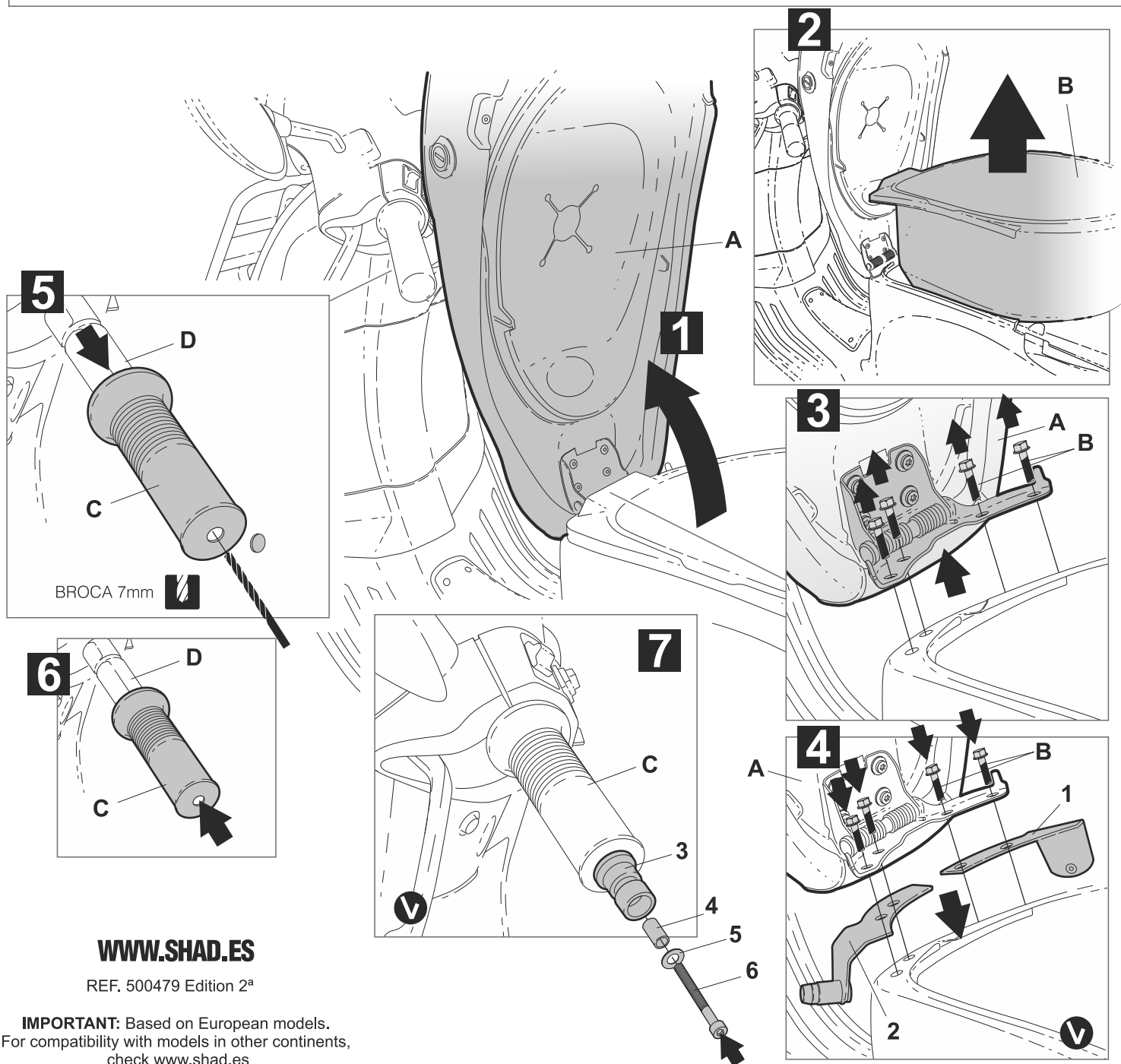
Zapfen besonders fest anziehen und
sicherstellen, dass er sich nicht
mehr bewegen kann. ALS
SCHMIERMITTEL IST NUR ÖL VOM
TYP (WD 40) ZU VERWENDEN
Alle 4 Monate Drehmoment
überprüfen.

(I)

Premere il perno con
forza. Assicursi che il
perno sia completamente
fissato. LUBRIFICARE
SOLO CON OLIO WD-40!
Controllare il serraggio
delle viti ogni 4 mesi.

(F)

Serrer fortement le pivot.
S'assurer qu'il reste
totalement fixé.
AVEC WD-40!
Vérifier le serrage des
vis tous les 4 mois.



WWW.SHAD.ES

REF. 500479 Edition 2ª

IMPORTANT: Based on European models.
For compatibility with models in other continents,
check www.shad.es