



MODEL KTM RC 390

YEAR 2014-2016

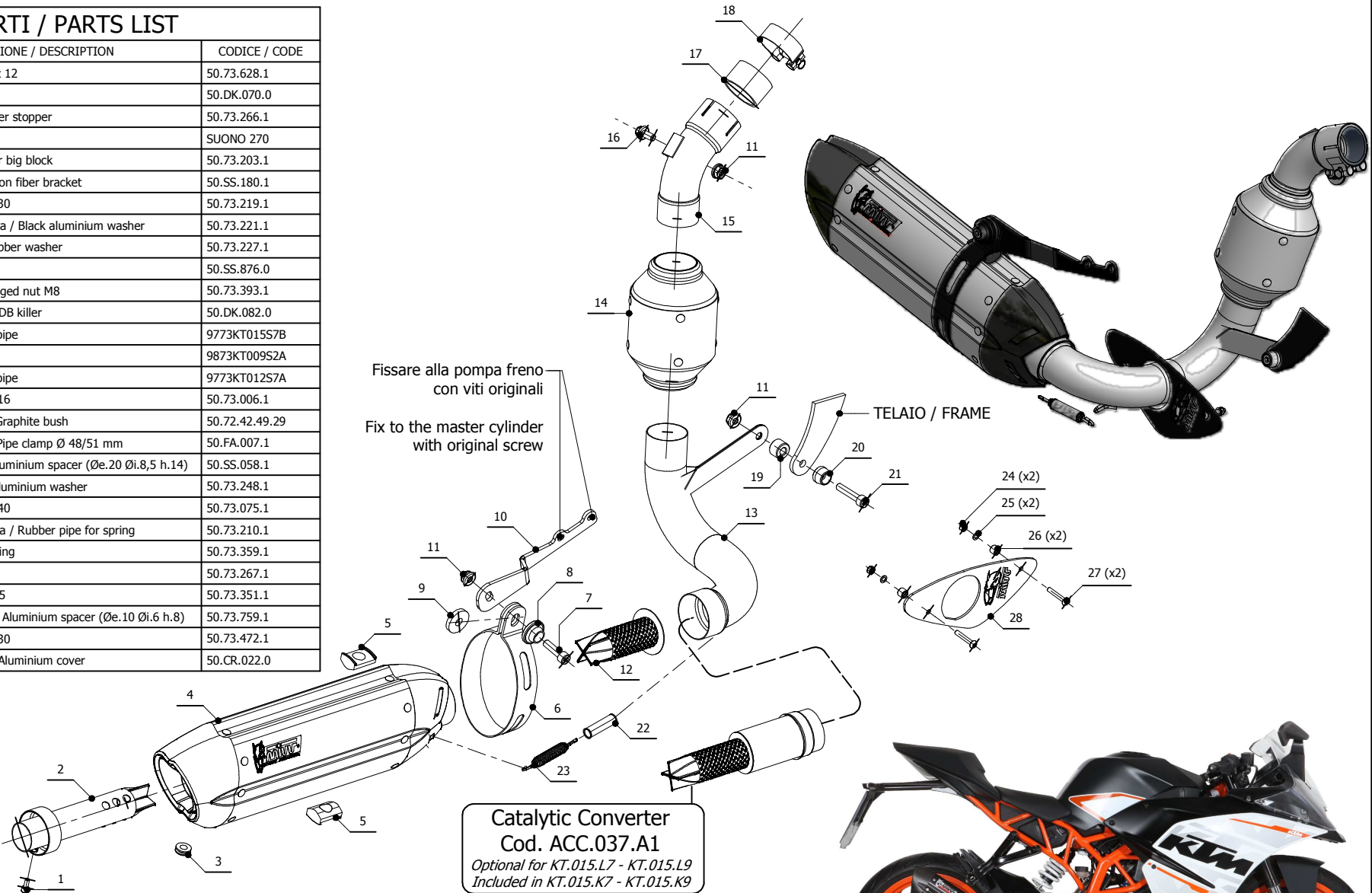
LINE FULL SYSTEM

MUFFLER SUONO

SCHEMATIC

ELENCO PARTI / PARTS LIST

#	QTÀ / QTY	DESCRIZIONE / DESCRIPTION	CODICE / CODE
1	1	Vite M5x12 / Screw M5 x 12	50.73.628.1
2	1	DB killer / DB killer	50.DK.070.0
3	1	Tappo in gomma / Rubber stopper	50.73.266.1
4	1	Silenziatore / Muffler	SUONO 270
5	2	Tassello grande / Rubber big block	50.73.203.1
6	1	Staffa in carbonio / Carbon fiber bracket	50.SS.180.1
7	1	Vite M8x30 / Screw M8x30	50.73.219.1
8	1	Rondella in alluminio nera / Black aluminium washer	50.73.221.1
9	1	Rondella in gomma / Rubber washer	50.73.227.1
10	1	Staffa / Bracket	50.SS.876.0
11	3	Dado M8 flangiato / Flanged nut M8	50.73.393.1
12	1	Db Killer forato / Drilled DB killer	50.DK.082.0
13	1	Tubo di raccordo / Link pipe	9773KT01557B
14	1	Silenziatore / Muffler	9873KT00952A
15	1	Tubo di raccordo / Link pipe	9773KT01257A
16	1	Vite M8x16 / Screw M8x16	50.73.006.1
17	1	Guarnizione in grafite / Graphite bush	50.72.42.49.29
18	1	Fascetta Ø 48/51 mm / Pipe clamp Ø 48/51 mm	50.FA.007.1
19	1	Distanziale alluminio / Aluminium spacer (Øe.20 Øi.8,5 h.14)	50.SS.058.1
20	1	Rondella in alluminio / Aluminium washer	50.73.248.1
21	1	Vite M8x40 / Screw M8x40	50.73.075.1
22	1	Tubo in gomma per molla / Rubber pipe for spring	50.73.210.1
23	1	Molla media / Middle spring	50.73.359.1
24	2	Dado M5 / M5 nut	50.73.267.1
25	2	Rondella M5 / Washer M5	50.73.351.1
26	2	Distanziale in alluminio / Aluminium spacer (Øe.10 Øi.6 h.8)	50.73.759.1
27	2	Vite M5x30 / Screw M5x30	50.73.472.1
28	1	Copertura in alluminio / Aluminium cover	50.CR.022.0



APPLICAZIONI / APPLICATIONS

CODICE / CODE	SILENZIATORE / MUFFLER	TUBO / PIPE	FASCETTA / CLAMP	NOTE
KT.015.L7 KT.015.L9	INOX (COPPE CARBONIO) / ST. STEEL (CARBON CAPS) STEEL BLACK	INOX / ST. STEEL	CARBONIO / CARBON FIBER	CATALYTIC CONVERTER NOT INCLUDED
KT.015.K7 KT.015.K9	INOX (COPPE CARBONIO) / ST. STEEL (CARBON CAPS) STEEL BLACK	INOX / ST. STEEL	CARBONIO / CARBON FIBER	CATALYTIC CONVERTER INCLUDED

