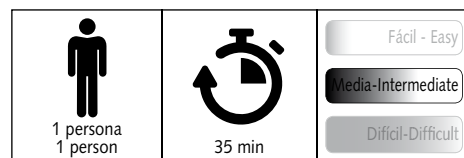
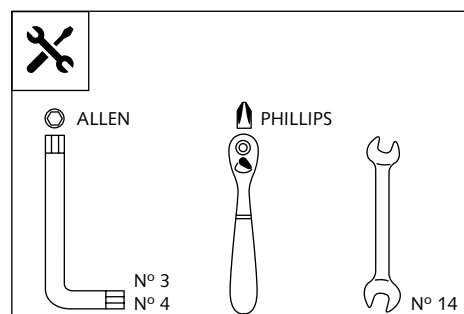


PARAMANOS PARA - HANDPROTECTORS FOR - HANDCHUTZPROTEKTOREN FÜR HONDA CB500 F '16 -



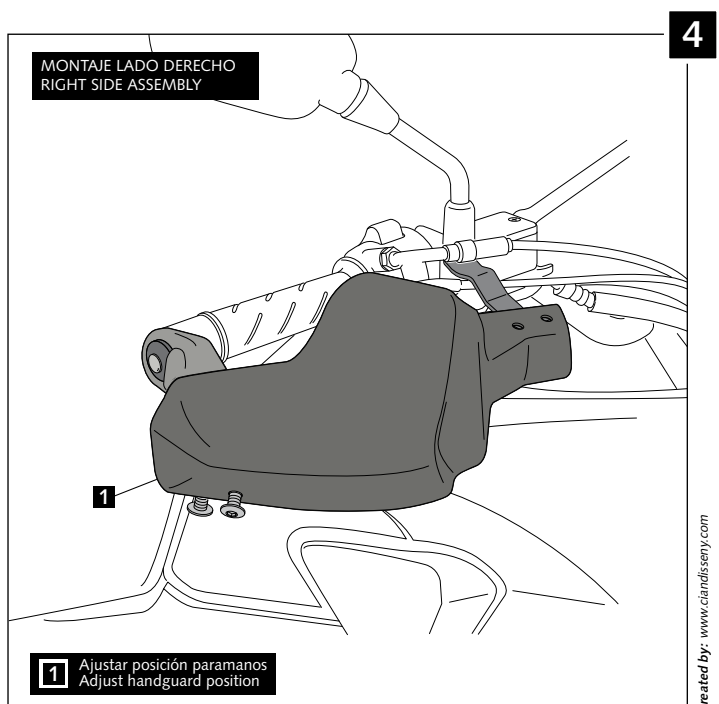
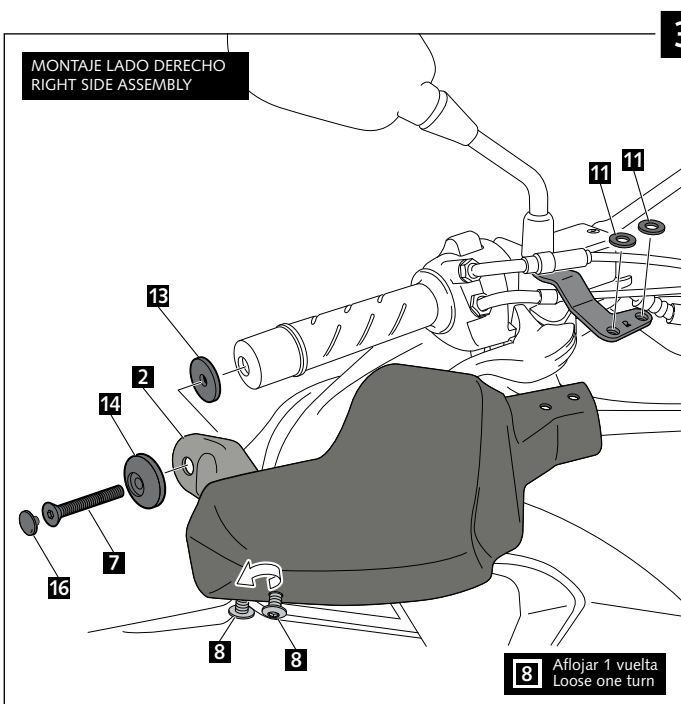
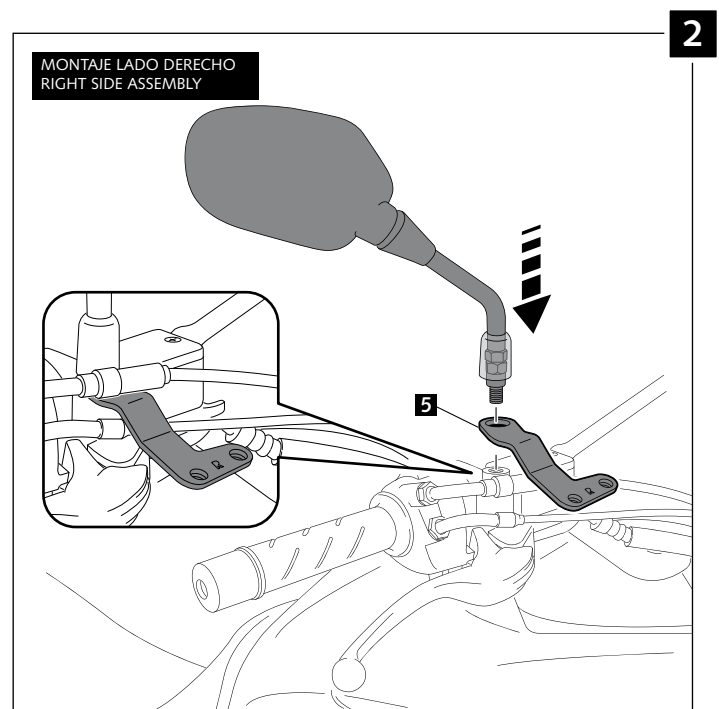
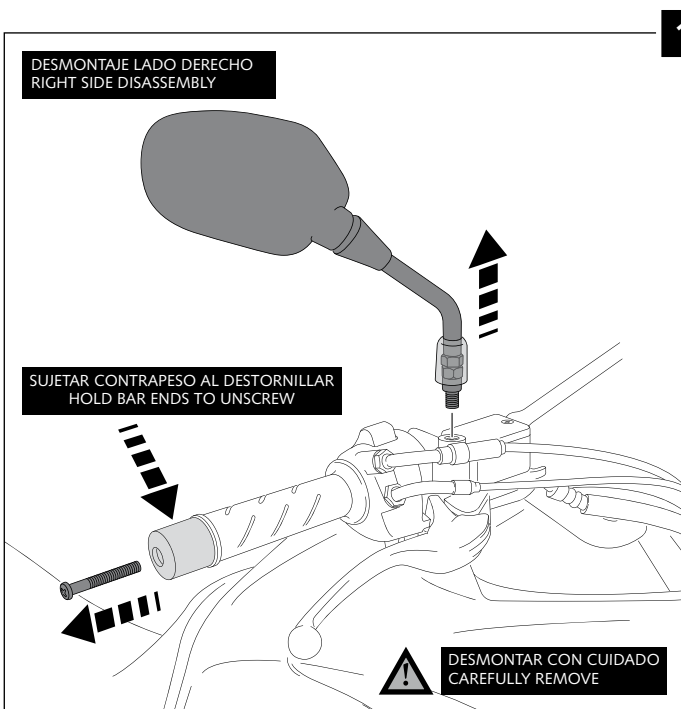
Ref.: 9236



ID.	PIEZA / PART	DESCRIPCIÓN	DESCRIPTION	QTY.
1		Paramanos derecho	Right handguard	1
2		Pieza derecha anclaje manillar Ø6.5 (se suministra montada)	Ø6.5 right handlebar anchoring part (supplied mounted with handguard)	1
3		Paramanos izquierdo	Left handguard	1
4		Pieza izquierda anclaje manillar Ø6.5 (se suministra montada)	Ø6.5 left handlebar anchoring part (supplied mounted with handguard)	1
5		Soporte metálico derecho (R)	Right metal support (R)	1
6		Soporte metálico izquierdo (L)	Left metal support (L)	1
7		Tornillo Allen M6x55 DIN 7991	M6x55 DIN 7991 Allen screw	2
8		Tornillo Allen M5x10 Ø11 ISO 7380	M5x10 Ø11 ISO 7380 Allen screw	8
9		Arandela de Nylon M5x1	M5x1 Nylon washer	8
10		Arandela de goma Ø4,5xØ11,5x2mm (se suministra montada)	Ø4,5xØ11,5x2mm Rubber washer (supplied mounted with handguard)	4
11		Arandela de goma Ø4,5xØ14x4mm	Ø4,5xØ14x4mm Rubber washer	4
12		Tuerca grafilada M5 (se suministra montada)	M5 Special nut (supplied already mounted)	4
13		Arandela de goma Ø30xØ6,5x1mm	Ø30xØ6,5x1mm Rubber washer	2
14		Arandela de plástico Ø30 x Ø6	Ø30 x Ø6 plastic washer	2
15		Tapón tornillo M5 ISO 7380	M5 ISO 7380 Allen screw cap	8
16		Tapón tornillo M6 DIN7991	M6 DIN7991 Allen screw cap	2
17		Kit adhesivos	Stickers set	1

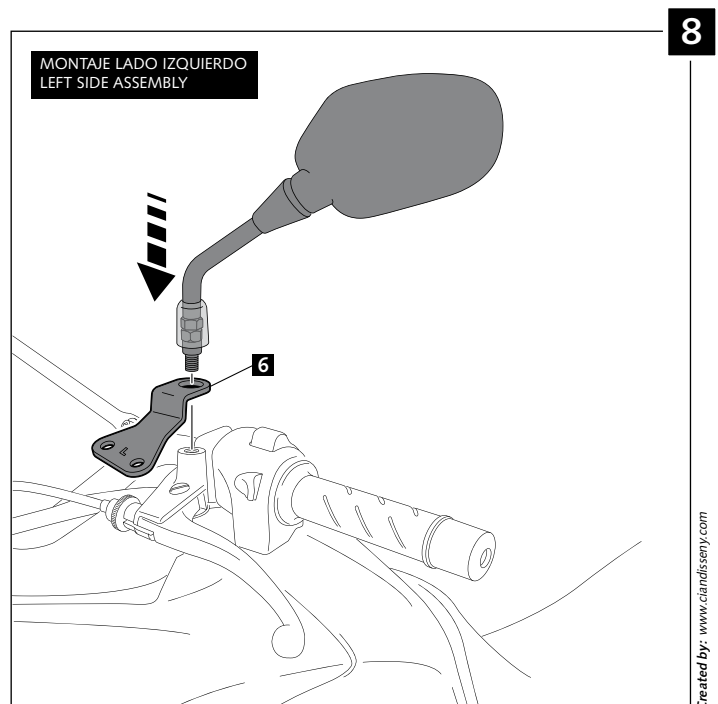
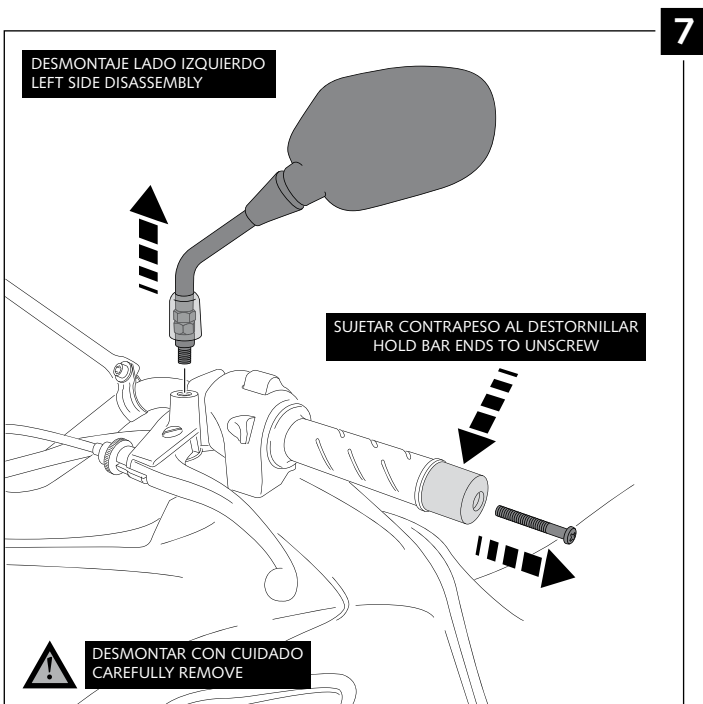
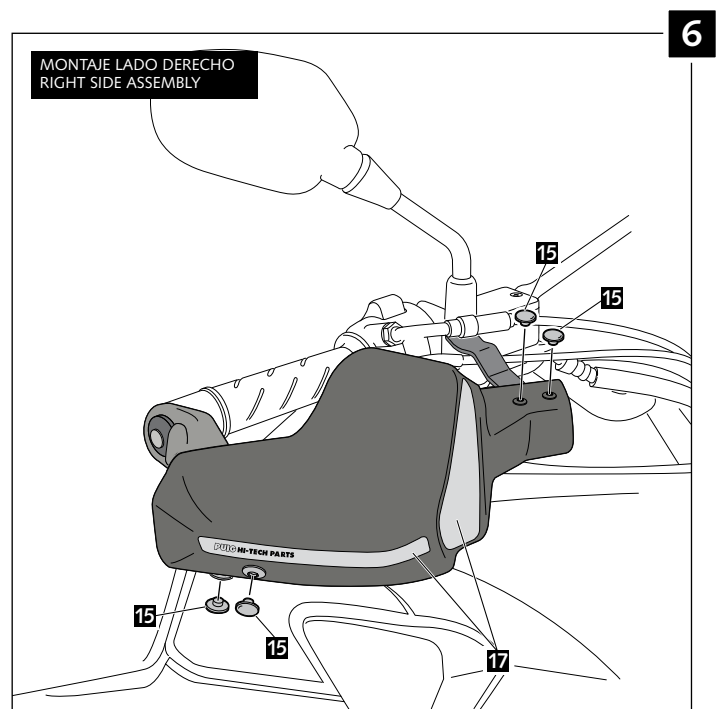
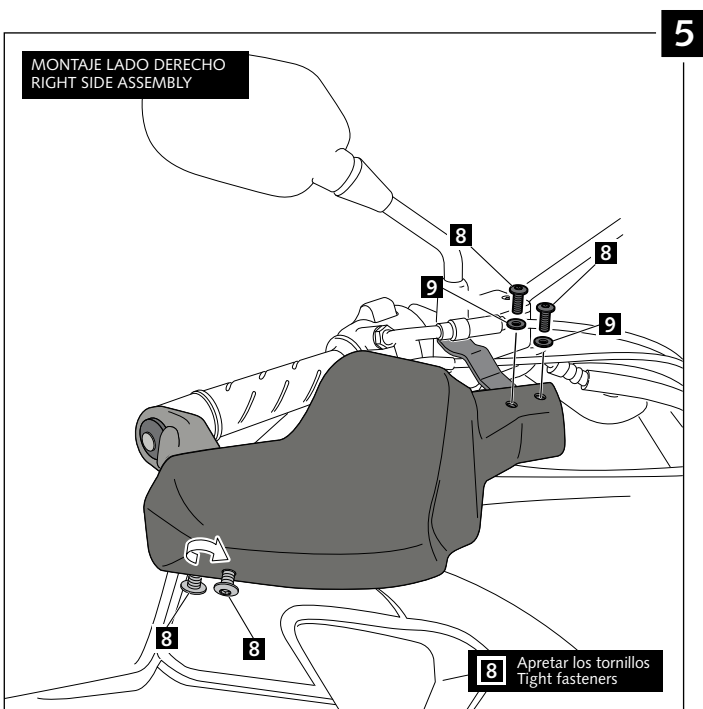
PARAMANOS PARA - HANDPROTECTORS FOR - HANDCHUTZPROTEKTOREN FÜR
HONDA CB500 F '16 -

INSTRUCCIONES DE MONTAJE - MOUNTING INSTRUCTIONS - MONTAGEANLEITUNG



PARAMANOS PARA - HANDPROTECTORS FOR - HANDSCHUTZPROTEKTOREN FÜR
HONDA CB500 F '16 -

INSTRUCCIONES DE MONTAJE - MOUNTING INSTRUCTIONS - MONTAGEANLEITUNG



PARAMANOS PARA - HANDPROTECTORS FOR - HANDSCHUTZPROTEKTOREN FÜR
HONDA CB500 F '16 -

INSTRUCCIONES DE MONTAJE - MOUNTING INSTRUCTIONS - MONTAGEANLEITUNG

